

# Franklyn James



244 Westferry Road, E14 3QJ  
£2,300 Per Calendar Month



244 Westferry Road, E14 3QJ

£2,300 Per Calendar Month

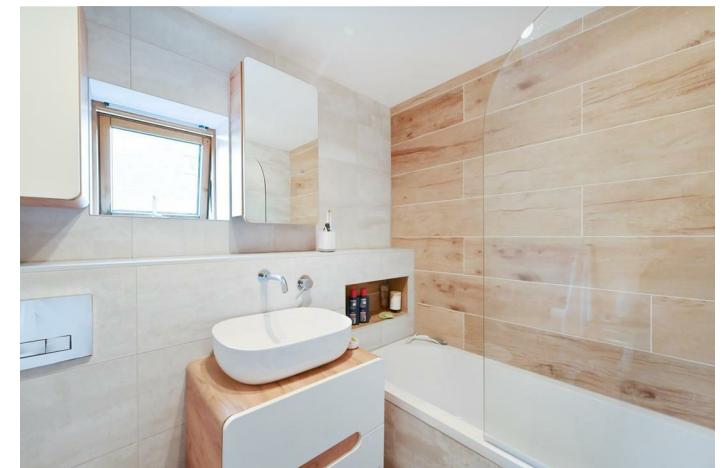
Offering spacious two bedroom and two bathroom property boasting a modern kitchen alongside an open-plan living space with a private balcony which provides an abundance of natural light to the living room.

Tasman Court is located close to the local shops and amenities on Westferry Road alongside being moments away from Canary Wharf, Mudchute Park and the River Thames.



## Description

- Furnished
- Master bedroom with spacious ensuite bathroom
- Modern kitchen with integrated appliances
- Balcony with views of Canary Wharf
- Gated allocated parking
- Ample storage
- Local Amenities
- Close to the River Thames and Thames Clipper
- Moments away from Mudchute DLR
- Well located within easy reach of Canary Wharf



Furnished  
Council Tax Band: D  
Available: 30th November 2023

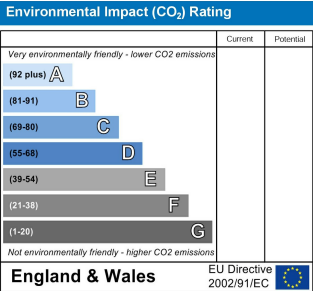
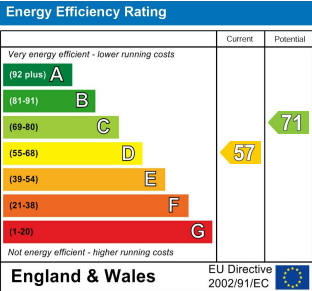




Area Map



Energy Performance Graph



These particulars, whilst believed to be accurate are set out as a general outline only for guidance and do not constitute any part of an offer or contract. Intending purchasers should not rely on them as statements of representation of fact, but must satisfy themselves by inspection or otherwise as to their accuracy. No person in this firms employment has the authority to make or give any representation or warranty in respect of the property.

Franklyn  
James

60 Westferry Road, London, E14 8JE  
Tel: 02070056080 Email: [lettings@franklynjames.co.uk](mailto:lettings@franklynjames.co.uk) <https://www.franklynjames.co.uk>